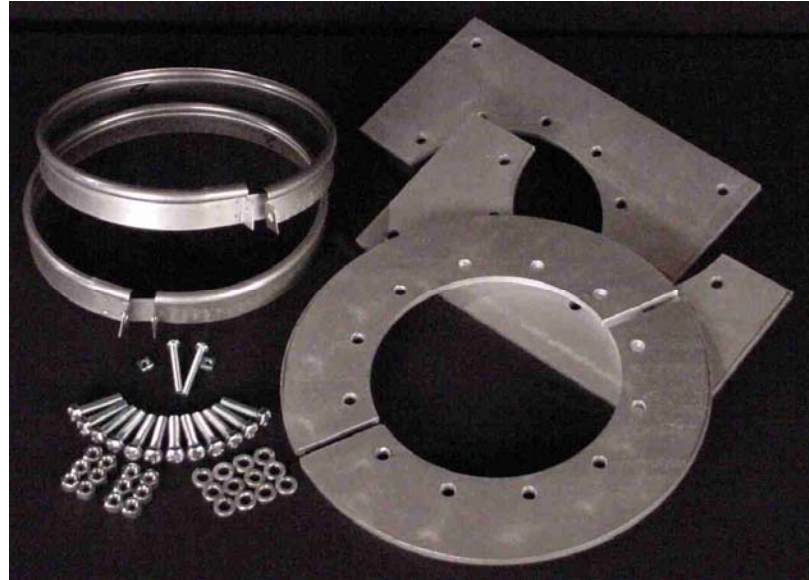


APPLICATION OF SUPPORTS



Double and Single
Wall Components

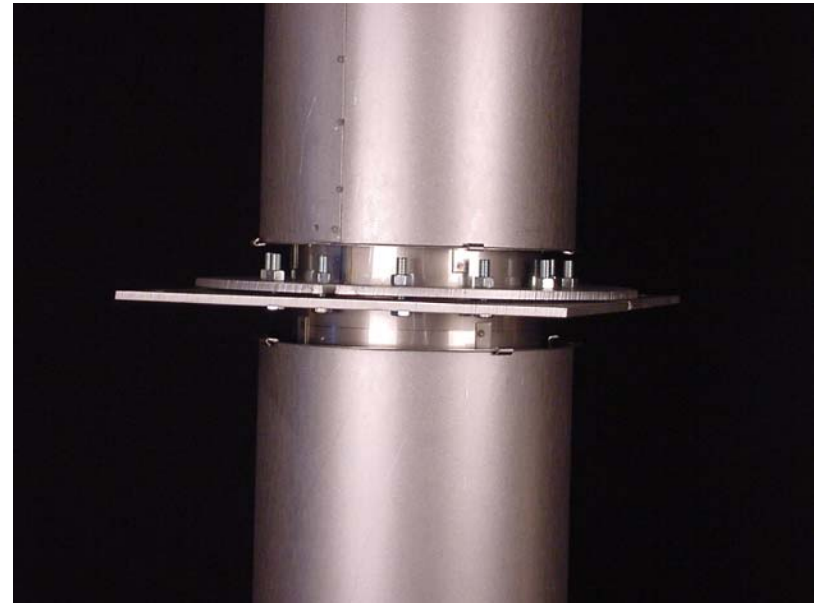
Plate Support Assembly



- Used as the main load bearing member and movement prevention assembly. The split plate and split clamp flange are assembled in two half sections aligned 90° apart, above and below mating inner pipe joints. The matching holes allow the use of 3/8” bolts and nuts to clamp the inner wall flanges forming a sandwich type assembly.

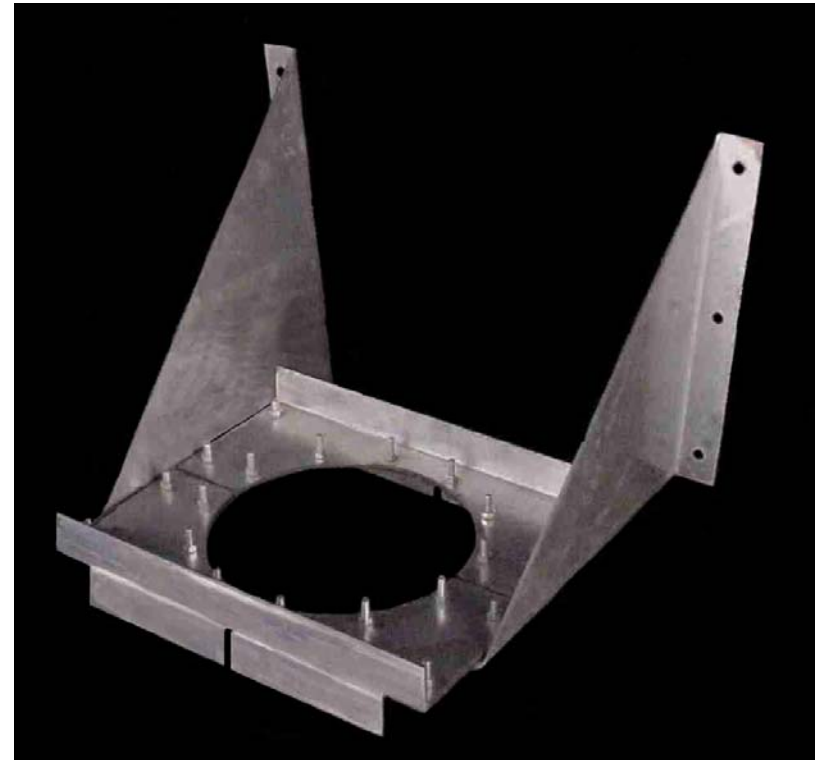
- The Plate Support is generally located in the vertical, within 4' of the outlet or at the top tee joint. Engine Exhausts and Grease Ducts need a plate support located at each change of direction because of expansion and possible fire related.

Plate Support



- Used as a means of supporting vertical stack. The Wall Support maintains a 6" clearance from the wall. Brackets must be installed in the upright position, as shown to the right. Anchor bolts used to support the brackets to the wall should be designed by the project engineer and purchased/installed by the contractor.

Wall Support Assembly

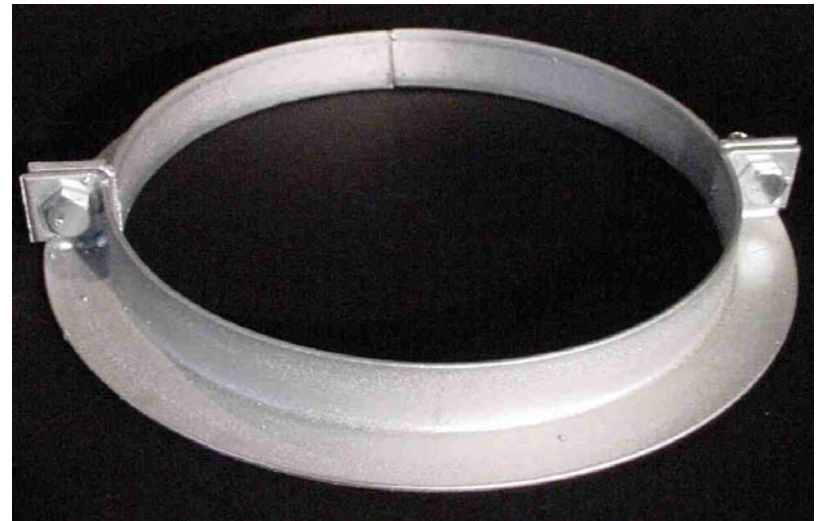


ALLOWABLE HEIGHT (FEET) This is how much footage the components can carry.

Chimney ID	DW		DWplus		DWplus2		DWplus3		DWplus4	
	WSA	PLS	WSA	PLS	WSA	PLS	WSA	PLS	WSA	PLS
06	201	284	174	235	145	189	119	156	99	130
08	170	284	149	235	122	189	101	156	85	130
10	152	284	131	235	107	189	89	156	75	130
12	142	284	123	235	97	189	81	156	68	130
14	107	272	91	225	77	183	65	152	56	128
16	102	260	88	215	73	176	61	147	53	124
18	91	247	78	205	65	168	55	141	48	120
20	85	235	72	195	61	161	51	136	44	116
22	76	223	65	185	54	153	47	130	40	111
24	70	211	60	175	50	145	43	123	37	106
26	67	198	57	165	48	137	41	117	35	101
28	64	186	54	155	45	129	39	107	33	95
30	60	174	51	145	43	121	36	104	32	91
32	57	162	48	135	40	113	34	98	27	75
34	50	149	42	125	36	105	27	79	24	70
36	42	137	36	115	27	85	24	73	21	65
38	37	125	32	105	25	84	22	73	19	65
40	32	113	27	95	23	83	20	73	18	65
42	26	101	23	85	20	74	17	65	15	58
44	21	89	19	75	16	66	15	58	13	52
46	17	76	16	65	14	57	12	50	11	45
48	15	64	13	55	12	48	11	43	10	38

- Used for lateral support. Required for supporting diameters of 26"ID and larger for horizontal runs. Also required for supporting horizontal engine exhaust systems of all diameters.

Full Angle Ring



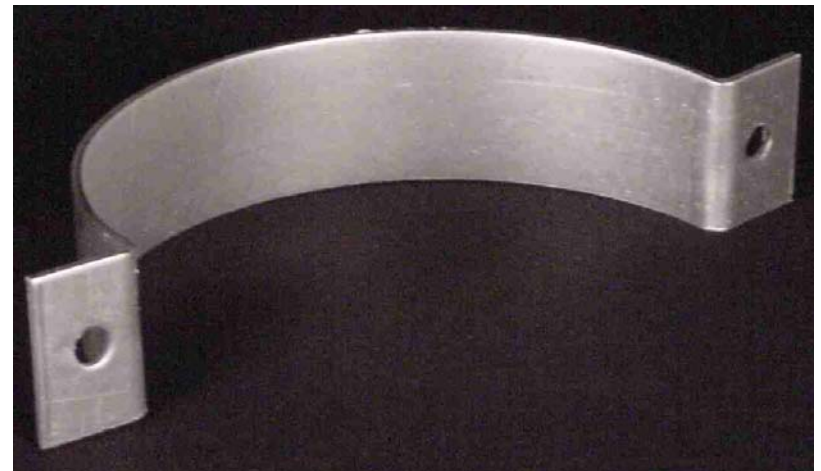
Half Angle Ring

- Used to support horizontal runs of DWplus2, Dwplus3 and DWplus4 insulated section sizes 24"ID and smaller. Do not use with engine exhaust systems.



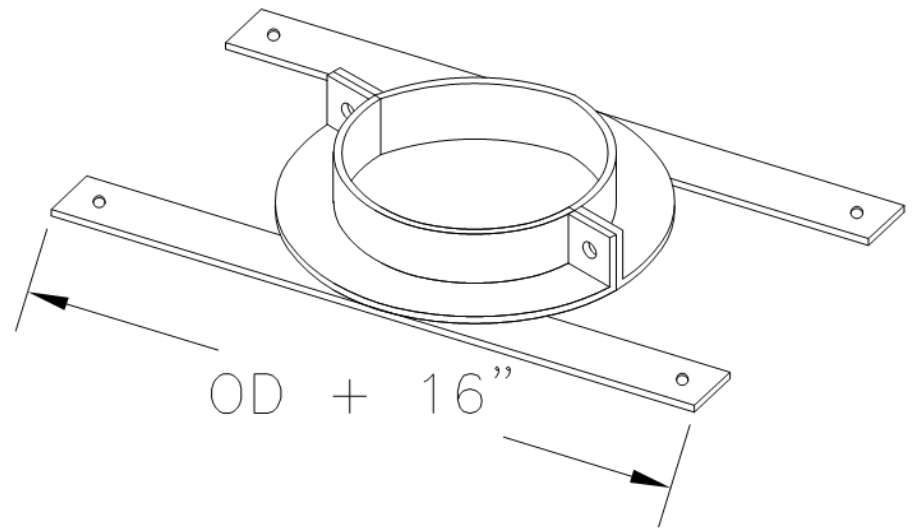
- Used as a support saddle for horizontal runs of Model DW and Model DWplus section sizes 24"ID and smaller. Do not use with engine exhaust systems.

Breeching Hanger Band



- Used to allow correct vertical guiding and free expansion of the stack system through each floor. Straps and Angle Struts allow for appropriate space and as a means of securing the Floor Alignment Guide.

Floor Guide Assembly



Wall Guide Assembly

- Used as a means of maintaining vertical alignment of system. Maintains a 6” clearance from the wall. Anchor bolts shall be designed by the project engineer and purchased by the contractor.



Limitations

- *Limitations are offered as guidelines only. Please refer to installation instruction sheets, or ask technical services for further detail.*
- *Support Spacing: The maximum distance between lateral supports, guys and breeching supports for all models is as follows.*

Maximum Height Above the Top Lateral Brace or Guy Point

- For diameters 6” thru 12”ID = 10’-0”
- For diameters 14” thru 48”ID = 15’-0”

You start from the top of the chimney (do not include the Double Cone Rain Cap) and come down 10 or 15 feet depending on diameter of chimney and that is where your top lateral brace or guy is located.

Maximum Spacing Between Lateral Braces or Guy Points

- 6" thru 48"ID = 30'-0"

So, in the vertical you start from the top of the stack and come down 10 or 15 feet (depending on size) for your first lateral brace. The second or third and etc., shall be located within every 30 feet from thereon.

PLEASE NOTE: Installations will vary.

Maximum Spacing Between Breeching Supports

- 6" thru 48"ID = 10'-0

The maximum spacing between breeching supports
of all sizes is 10 feet.

PLEASE NOTE: Installations will vary.

Items To Take Into Consideration

- There is an allowable height above a straight section and a tee section. Please take note to the following chart and compare it with the Allowable Height Chart for the Wall Support Assembly and Plate Support Assembly. It will make life easier if you follow the rules.

ALLOWABLE HEIGHT (FEET) This is how much footage the components can carry.

Chimney ID	DW		DWplus		DWplus2		DWplus3		DWplus4	
	STR	TEE	STR	TEE	STR	TEE	STR	TEE	STR	TEE
06	225	89	189	76	152	62	125	52	105	4
08	225	89	189	76	152	62	125	52	105	44
10	225	89	189	76	152	62	125	52	105	44
12	225	89	189	76	152	62	125	52	105	44
14	213	89	179	76	145	62	121	52	102	44
16	201	89	169	76	138	62	115	52	98	44
18	189	82	159	70	131	57	110	48	93	41
20	177	75	148	64	122	53	103	44	88	38
22	165	68	138	57	114	47	97	40	83	34
24	153	60	128	51	106	42	90	36	78	31
26	150	53	126	45	105	37	89	32	77	27
28	147	46	123	39	103	33	87	28	76	24
30	144	39	120	33	100	28	86	24	75	21
32	141	31	118	27	99	23	86	20	66	15
34	138	24	115	20	97	17	73	13	64	11
36	135	17	113	14	83	10	72	9	63	8
38	102	15	88	13	77	11	68	10	60	9
40	101	15	86	13	75	11	66	10	59	9
42	101	15	84	13	73	11	64	10	57	9
44	101	15	82	13	72	11	63	10	56	9
46	100	15	81	13	71	11	63	10	56	9
48	100	15	79	13	69	11	61	10	55	9



Thank-You

For Considering Van-Packer Products